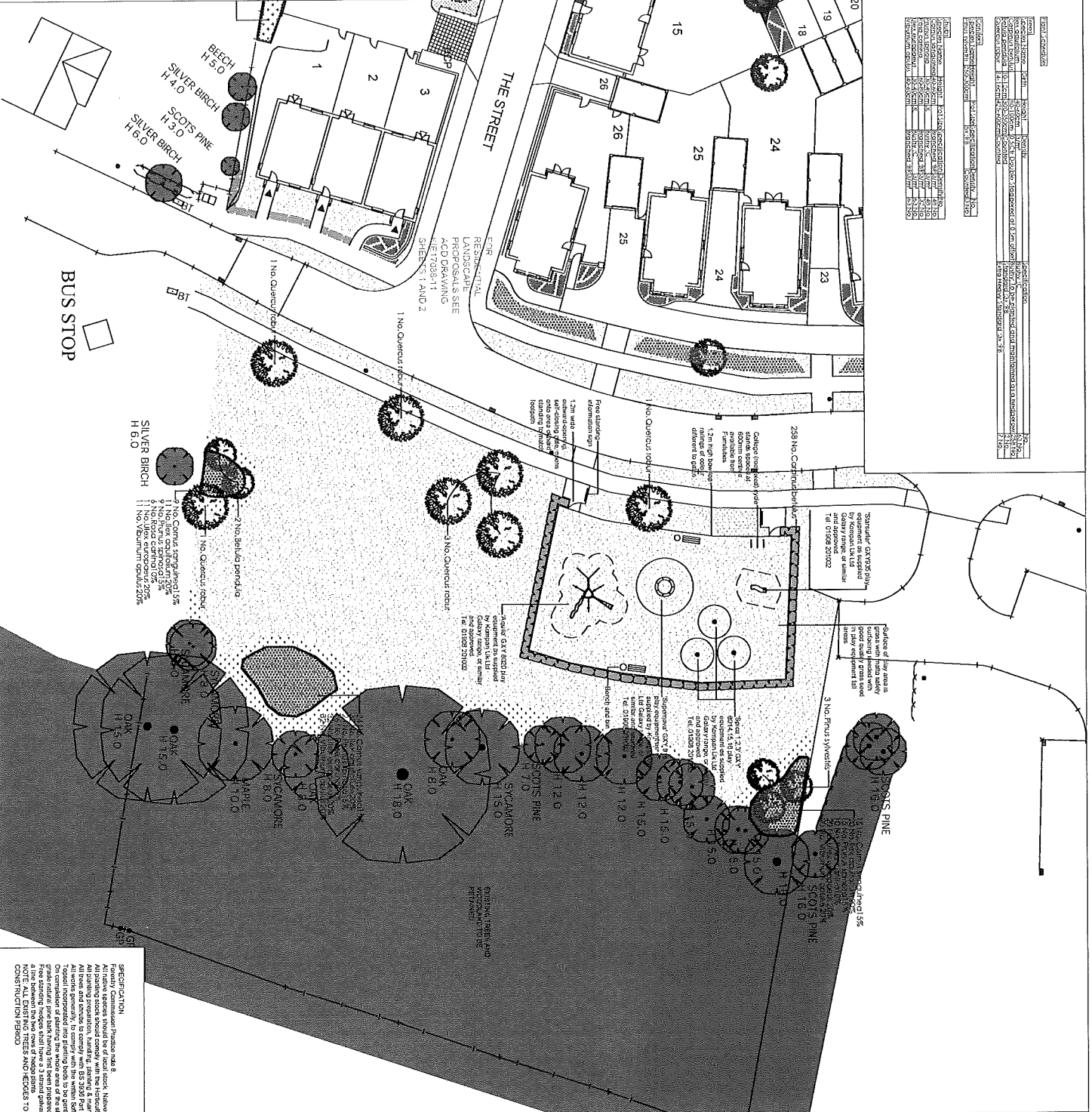


DATE: 15/03/2024	PROJECT: BRANDON ROAD, THETFORD LEAP AND OPEN SPACE
DRAWN BY: J. DICKSON	CHECKED BY: J. DICKSON
SCALE: AS SHOWN	PROJECT NO: 240006A1
CLIENT: KIER HOMES	LOCATION: BRANDON ROAD, THETFORD
DATE: 15/03/2024	PROJECT: BRANDON ROAD, THETFORD LEAP AND OPEN SPACE
DRAWN BY: J. DICKSON	CHECKED BY: J. DICKSON
SCALE: AS SHOWN	PROJECT NO: 240006A1
CLIENT: KIER HOMES	LOCATION: BRANDON ROAD, THETFORD
DATE: 15/03/2024	PROJECT: BRANDON ROAD, THETFORD LEAP AND OPEN SPACE
DRAWN BY: J. DICKSON	CHECKED BY: J. DICKSON
SCALE: AS SHOWN	PROJECT NO: 240006A1
CLIENT: KIER HOMES	LOCATION: BRANDON ROAD, THETFORD



- Legend**
- Existing trees to be retained and protected during construction
  - Proposed tree planting to receive short double staking with excavator rubber tire bars and irrigation tubing to root system
  - Proposed hedge planting to be planted in a double staggered row 500mm apart and planted 500mm apart in each row with 75mm bank much to base, to be maintained at a maximum height of 1.2m
  - Proposed stake row staking planting to be planted in a double staggered row 500mm apart of each stake and to receive 75mm bank much after planting operations
  - Proposed grass areas to receive good quality amenity grass sown in line with good horticultural practices
  - Proposed grass areas to be seeded with good quality wildflower grass seed mix in line with good horticultural practices
- Play area information sign to indicate that the play area is not a safe facility, parents should be provided with an invitation to report any incident or damage to the LEAP or play equipment. The location of the nearest telephone should also be indicated.
- Play experiences offered with play equipment:
- Species
  - Climbing
  - Balancing
  - Training
  - Swinging
  - Climbing

**SPECIFICATION**

1. All trees and shrubs to be planted in accordance with the Horticultural Trade Association National Planting Standards (HTAS) and the British Standard BS 5831:2016. All trees and shrubs to be planted in accordance with the Horticultural Trade Association National Planting Standards (HTAS) and the British Standard BS 5831:2016. All trees and shrubs to be planted in accordance with the Horticultural Trade Association National Planting Standards (HTAS) and the British Standard BS 5831:2016.

2. All trees and shrubs to be planted in accordance with the Horticultural Trade Association National Planting Standards (HTAS) and the British Standard BS 5831:2016. All trees and shrubs to be planted in accordance with the Horticultural Trade Association National Planting Standards (HTAS) and the British Standard BS 5831:2016. All trees and shrubs to be planted in accordance with the Horticultural Trade Association National Planting Standards (HTAS) and the British Standard BS 5831:2016.

3. All trees and shrubs to be planted in accordance with the Horticultural Trade Association National Planting Standards (HTAS) and the British Standard BS 5831:2016. All trees and shrubs to be planted in accordance with the Horticultural Trade Association National Planting Standards (HTAS) and the British Standard BS 5831:2016. All trees and shrubs to be planted in accordance with the Horticultural Trade Association National Planting Standards (HTAS) and the British Standard BS 5831:2016.

4. NOTE: ALL EXISTING TREES AND HEDGES TO BE PROTECTED IN ACCORDANCE WITH BS 5837:2009 FOR THE DURATION OF THE CONSTRUCTION PERIOD.

# Brandon Road, Thetford

## LEAP and Open Space Proposals

**ACD**

LANDSCAPE ARCHITECTS

100, THE GARDENS, THETFORD, NORFOLK, IP24 2LJ

TEL: 01263 527171 FAX: 01263 527172

WWW.ACDLANDSCAPEARCHITECTS.CO.UK

CLIENT: Kier Homes

SITE: Brandon Road, Thetford

DATE: AUG 09

SCALE: 1:2000

DRAWING NO: KIE17088A1

DRAWN BY: J. DICKSON