

# A guide to the new local area agreements

Presentation to Full Council  
17 January 2008

Breckland  
COUNCIL



*a better place, a brighter future*

# Introduction to new Local Area Agreements

- Norfolk Local Area Agreement (LAA) is currently being negotiated
- New agreement will run from June 08 - 11
- LAA is centrepiece of partnership working and there is a vital role for councillors
- Flexibility about outcomes and targets (at least 35 to be chosen for Norfolk)
- New LAA will form basis of forthcoming Comprehensive Area Assessments

# The key role of councillors

- **Leadership:** lead partnership (Local Strategic Partnership) and decision-making process on outcome selection and delivery against targets; influence partners
- **Strategy development:** Sustainable Community Strategy and Local Development Framework are basis for LAA – councillors should lead development of key strategies

# The key role of councillors (cont.)

- **Scrutiny:** scrutinise other public services and hold them to account; focus on area (Breckland) and not authority (Breckland Council)
- **Community representation:** advocate needs of community; define LAA to reflect these needs

# What's new?

- Statutory duty on Norfolk CC to negotiate LAA
- All LAAs nationwide on same timetable
- Local flexibility in priority setting
- Introduction of national indicator set (198 indicators)
- Statutory duty to cooperate
- New scrutiny powers for local authority
- External assessment by Comprehensive Area Assessment

# Community Leadership

- LAA will reinforce the Council's Community Leadership role
  - Building consensus around a vision for an area
  - Brokering local partnership activity and collaboration between agencies

# Bringing together the Sustainable Community Strategy, LAA and Local Development Framework

- There is a close relationship between the Sustainable Community Strategy, LAA and the Local Development Framework:
  - The Sustainable Community Strategy should be the vehicle for setting out the vision for a place and addressing the key long-term challenges facing an area
  - The Local Development Framework should reinforce it by setting out the key spatial strategies for the area such as house-building and related infrastructure provision
  - The LAA should act as the delivery plan for the Sustainable Community Strategy

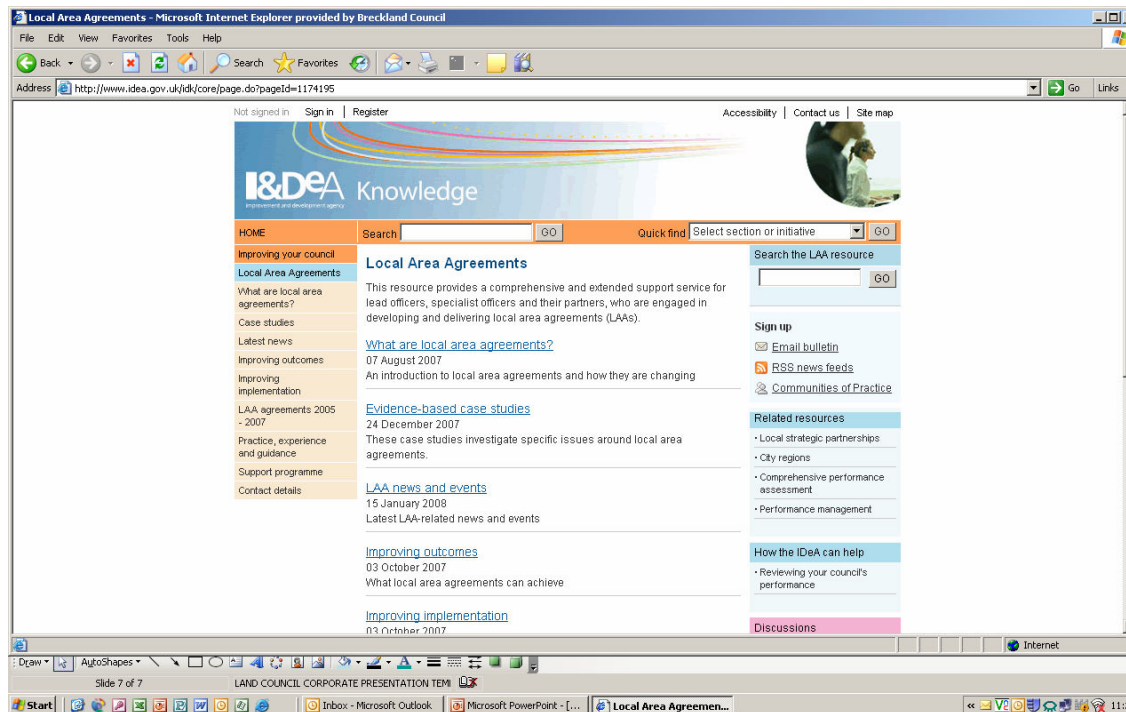
# Making it work – locally...

- Influence priority setting at county level to ensure (where possible) priorities reflect Breckland needs/issues
- Publish and deliver Sustainable Community Strategy and Local Development Framework that make real difference for local people
- Implement area-based working across Breckland – local activity contributing to strategic priorities
- Put scrutiny arrangements in place to assess the service delivery of partner agencies in Breckland
- Prepare for Comprehensive Area Assessment



# Further information...

- I&D<sup>e</sup>A website – [www.idea.gov.uk](http://www.idea.gov.uk)



Breckland  
COUNCIL



*a better place, a brighter future*